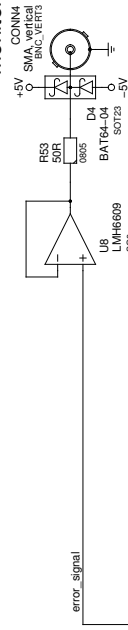
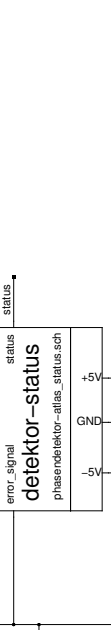


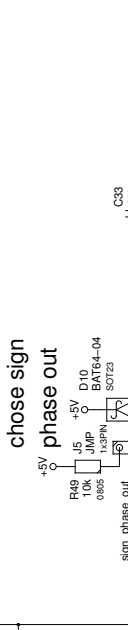
phase monitor



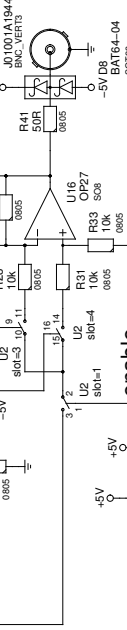
reference



preamp reference



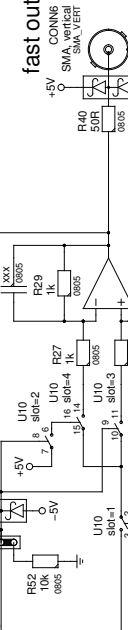
signal



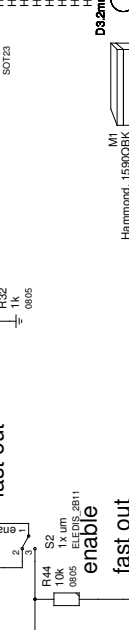
preamp signal



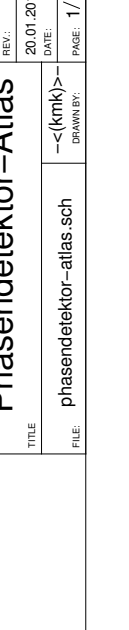
divider



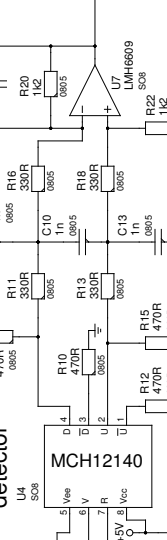
supply



status



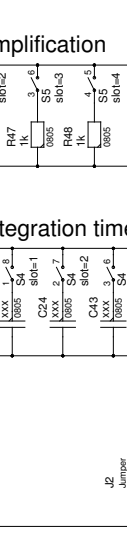
phase detector



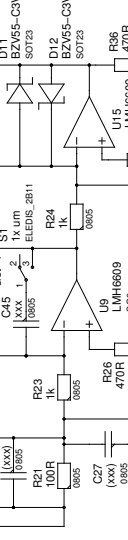
loop amplifier



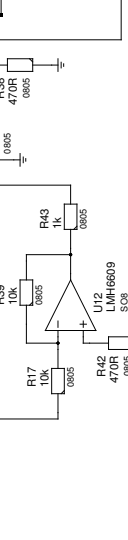
integrator



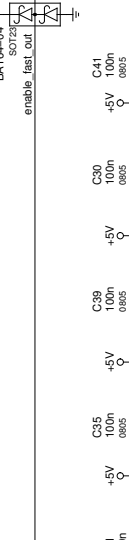
proportional



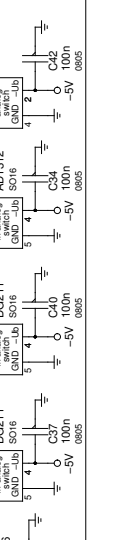
loop filter



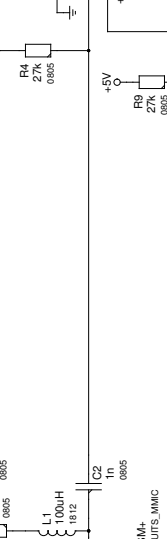
reset



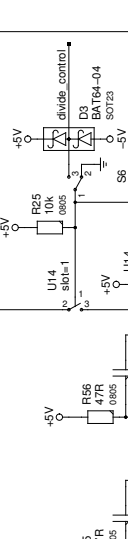
enable



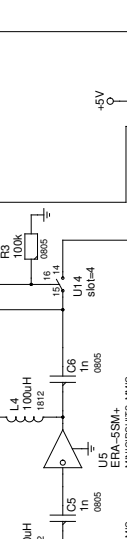
phase sign



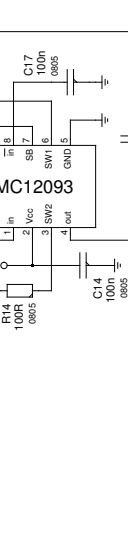
phase out



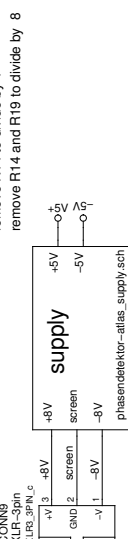
enable phase out



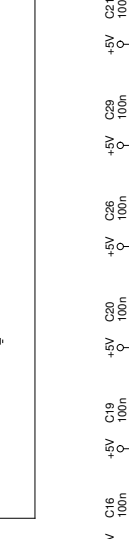
sign phase out



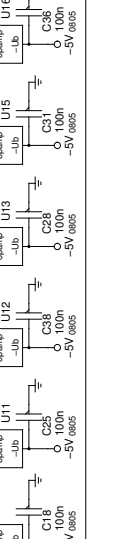
sign last out



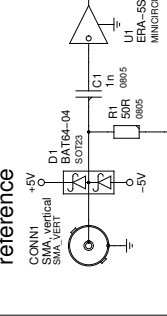
chase sign



chase phase out



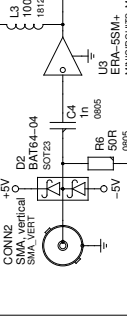
fast out



fast out



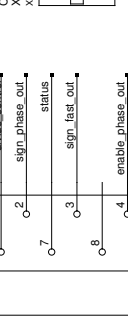
enable fast out



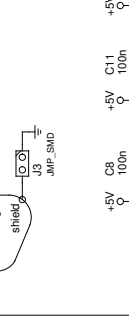
enable fast out



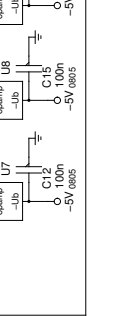
enable fast out



enable fast out



enable fast out



error signal



error signal



error signal



error signal



error signal



error signal



error signal



Hammond\_1590CBK  
BOX\_HAMMOND\_1590C

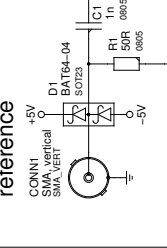
M1  
D82mm  
1.0

REV: 20.01.2010  
DATE: 20.01.2010  
DRAWN BY: <(kmm)>

FILE: phasendetektor-atlas.sch

Phasendetektor-Atlas

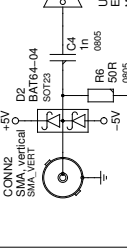
CONNS



CONNS



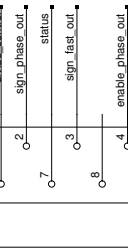
CONNS



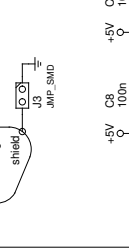
CONNS



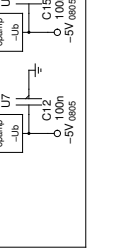
CONNS

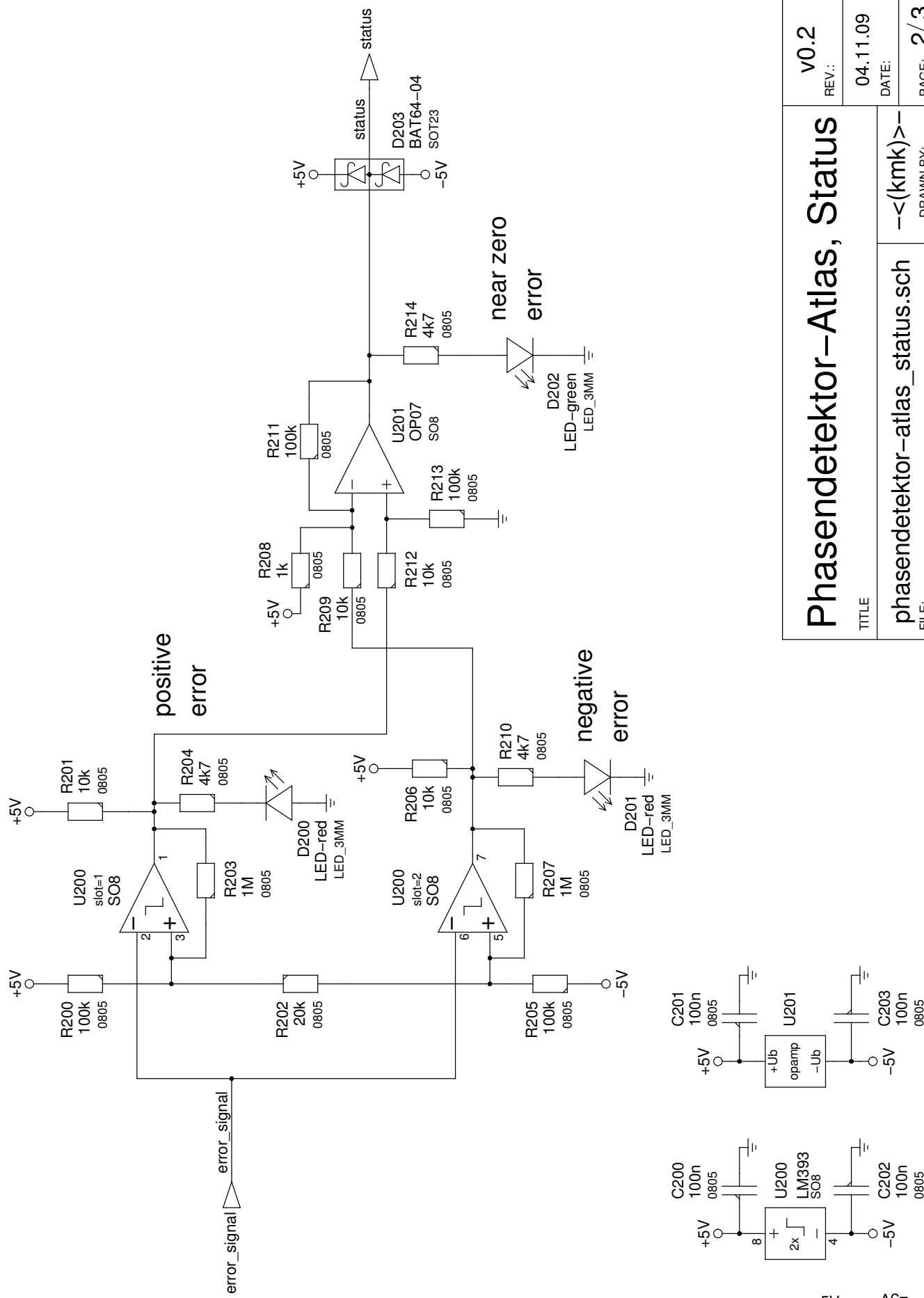


CONNS



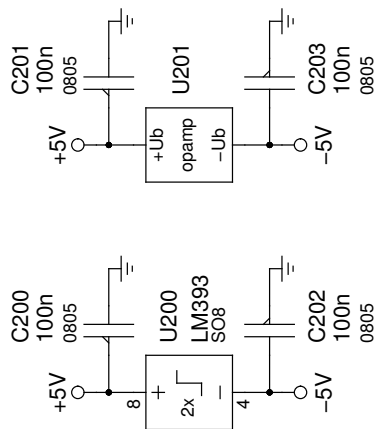
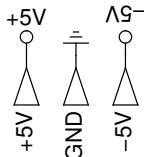
CONNS



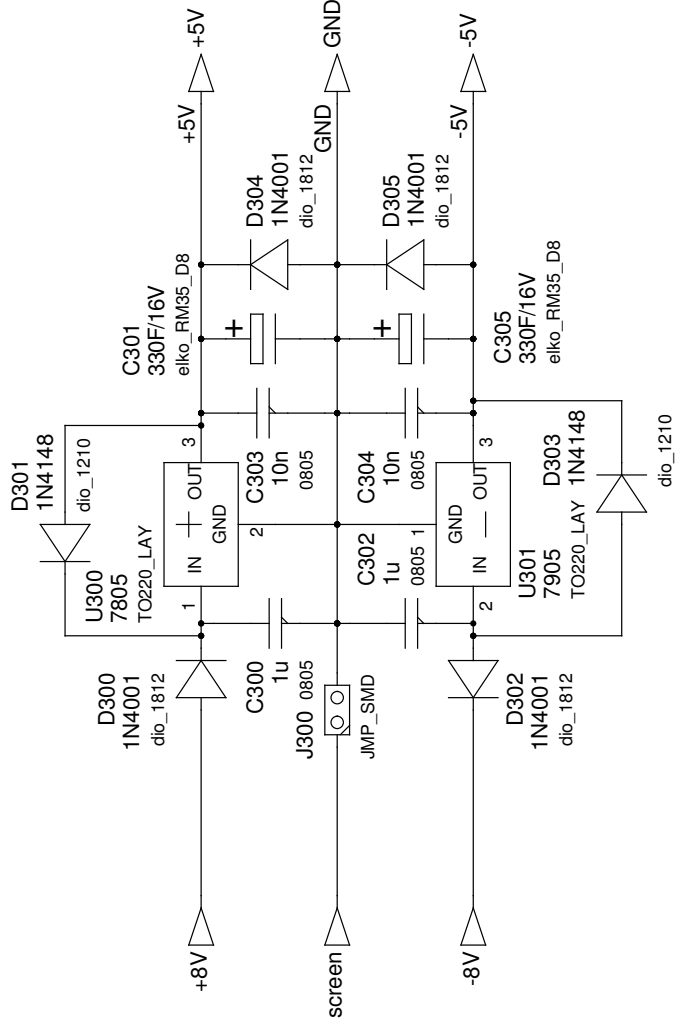


# Phasendetektor-Atlas, Status

TITLE: phasendetektor-atlas\_status.sch  
 FILE: --<(kmk)>--  
 DRAWN BY:



## +/- 5V supply



# Phasendetektor-Atlas, Supply

TITLE

phasendetektor\_atlas\_supply.sch

FILE:

v0.2  
REV.:

03.11.09  
DATE:

PAGE: 3/3

-<(kmk)>-  
DRAWN BY: