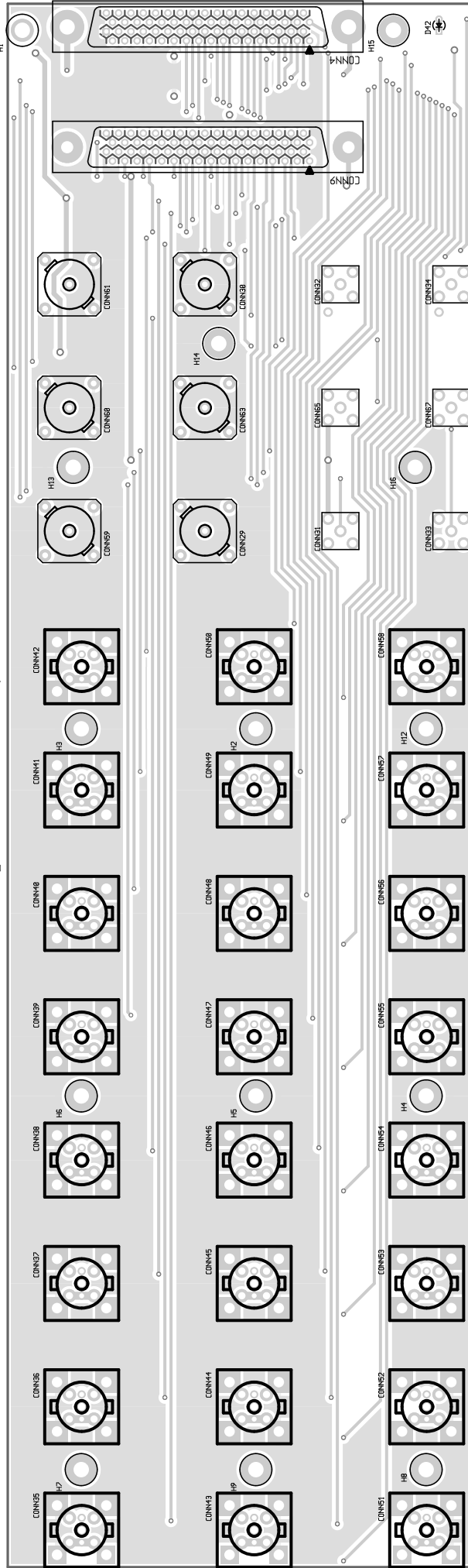


NI-Verteiler 4, analog out

Abmessungen der Leiterplatte: XXX mm x XXX mm

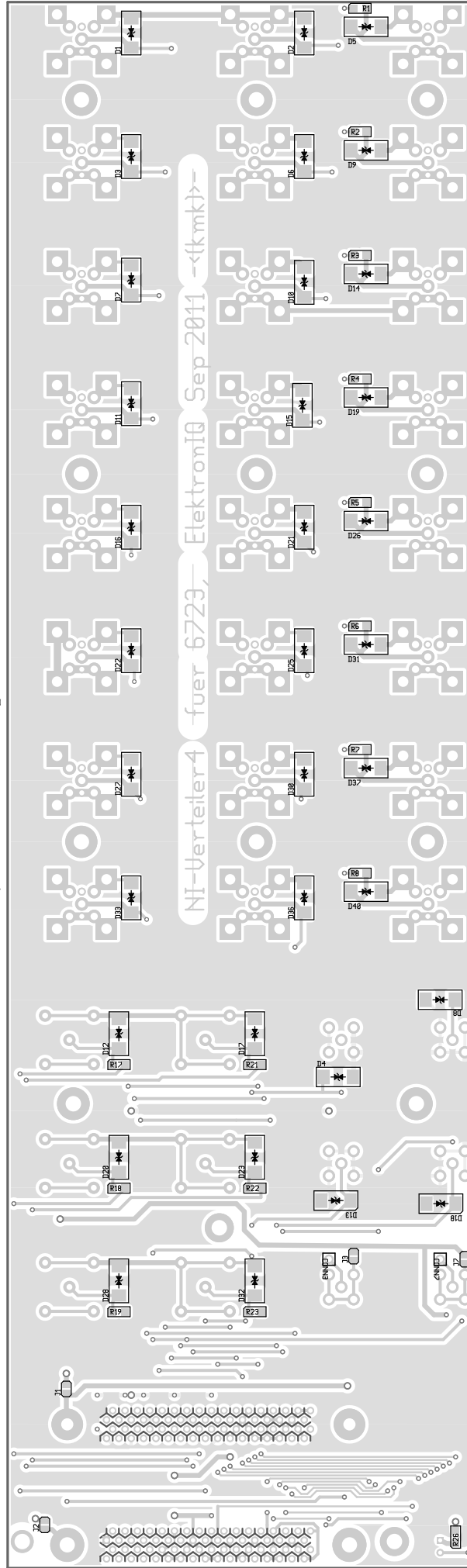
(grid is 25 mil)



(Dim 2S ei birp)

mm XXX x mm XXX :stlqrtstisJ reb nsgnzesmrdA

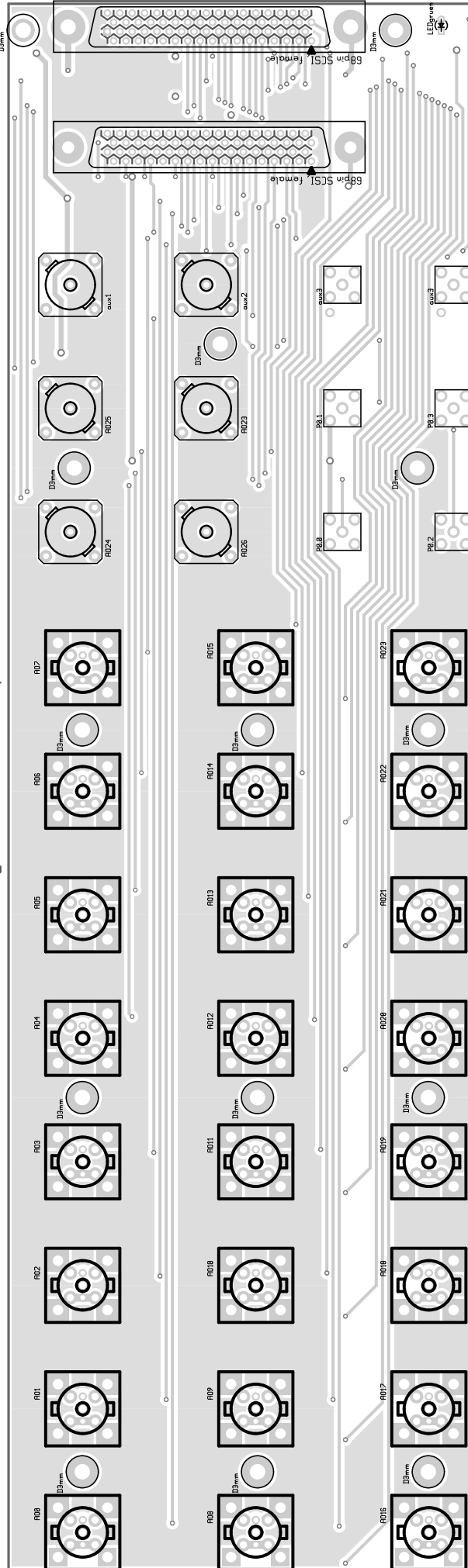
NI-Verteiler, Verteiler NI



NI-Verteiler4, analog out

Abmessungen der Leiterplatte= XXX mm x XXX mm

(grid is 25 mil)



(lim 2S ei birp)

mmr XXX x mmr XXX :stlqlrftisJ reb nsgmzesmrdA

NI-Verteiler 4, Verteiler NI

