

# PD\_QAI\_MOT

## Funktion

A simply PD amplifier PCB.

## Versions

There is a mirrored version!

There is a "version 2.0" that is not yet very much tested (09.2021).

There is an AutoCAD file for a stray-light protection.

## Date

Start of the project: April 2020

## Status

Is used in the QAI detection MOT. Works so far.

## Author

Martin Quensen, quensen@iqo.uni-hannover.de

## Idea

Version 2: A single transimpedance amplifier (OPA656), and a place to glue a 10mm x 10mm PD onto. SMA connection, PSK3pin for supply. That's it.

(version 1.0 had an OPA656 and a second OPamp for further amplification).

## Git

[Git](#)

## Layout

- 22.5mm x 37.75mm

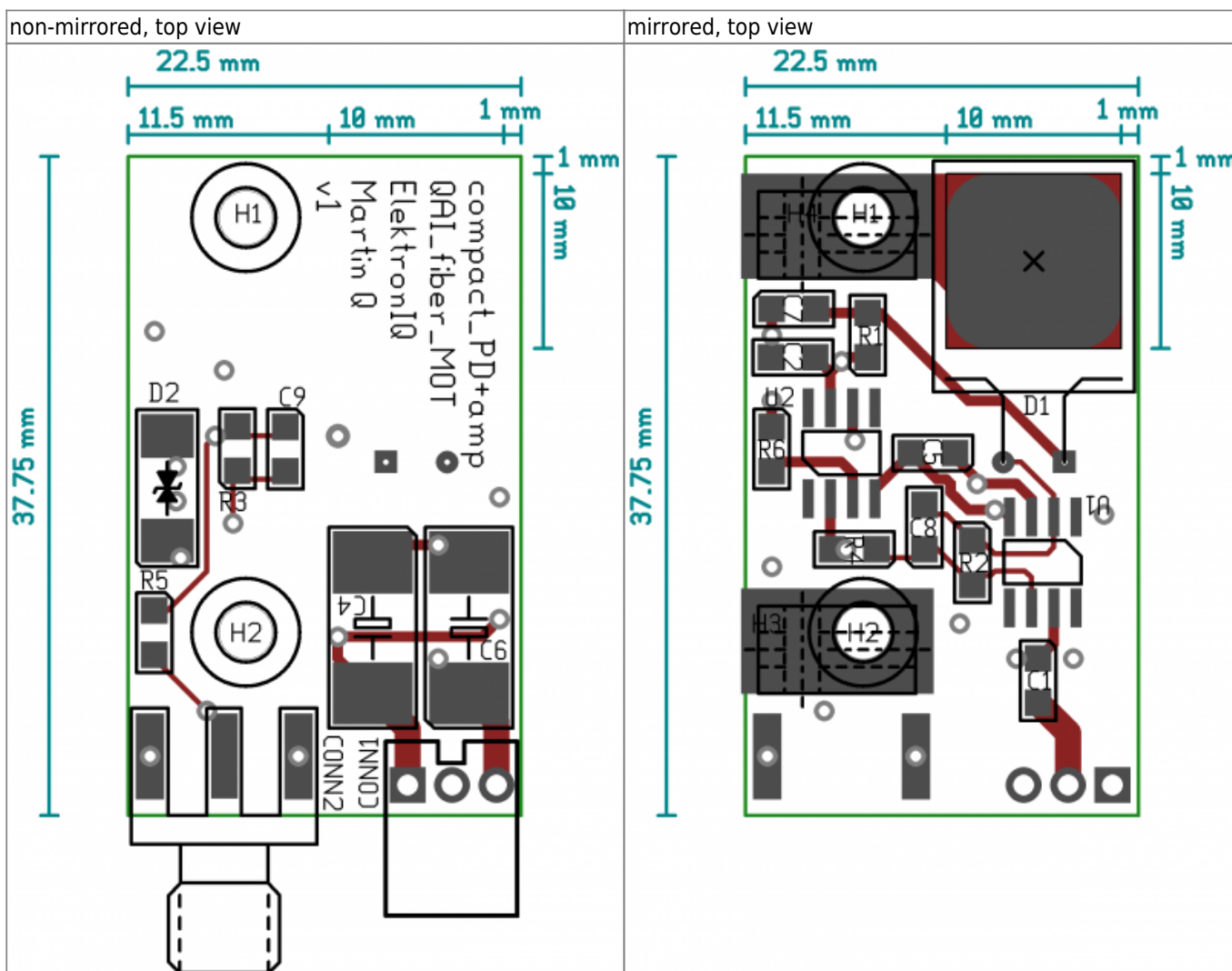
- Supply: needs +/- 5V from extern (PSK-3pin)
- Output: SMA
- LEDs: None

## Casing

None.

## Pictures

- Version 1.0!





From:  
<https://elektroniq.iqo.uni-hannover.de/> - **ElektronIQ**

Permanent link:  
<https://elektroniq.iqo.uni-hannover.de/doku.php?id=eigenbau:photodiode:pdqaimot:start>

Last update: **2021/10/07 14:26**

